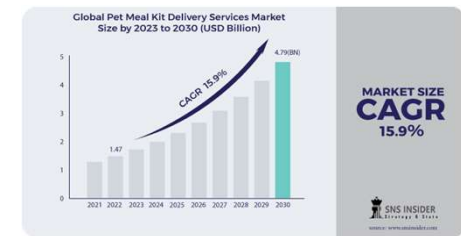


Signatureby was founded in 2018 and has since established relationships with veterinary schools, associations, and R&D centers, while concurrently gaining validation for its **excellence** and **safety** in more than **3,000 animal hospitals**.



Market

- √ The pet market is **rapidly growing worldwide** due to various factors such as declining birth rates, an increase in single-person households, and population aging.
- √ The perception of pets as family members and advancements in medical technology have led to an **increase in the lifespan of pets**.
- √ They often require **veterinary care** for various health conditions throughout **more than half of their life cycle**, especially beyond the age of 6-7 years.



Problem

Pet's "health gap" are becoming more prevalent as pets live longer life cycles

- √ Pet owners **often find it challenging to visit the veterinary clinic** regularly for various reasons.
- √ In many cases, **surgery and prescriptions administered at the hospital are insufficient** for complete treatment and recovery.
- √ Pet owners often face a **lack of accessible health information** for their pets, and there are limitations in consulting with veterinarians.



Solution

Signatureby is a brand created by **veterinarians** to address the **unmet needs** between animal hospitals and pet owners

- Veterinarians prescribe medications such as antibiotics, anti-inflammatories and antihistamines based on diagnoses for internal conditions. However, there are **often limitations in prescribing for recovery and prevention of relapse.**
- Pet owners **often face challenges**, such as **difficulties** in getting them to eat well, administering medications or brushing their teeth.
- Furthermore, when it comes to symptoms like occasional vomiting or diarrhea, lethargy, or dealing with a recurring illness, **pet owners often feel uncertain** about what they can do for overall recovery and prevention of recurrence **without visiting the hospital.**



In such situations, we strive to provide **evidence-based supplementary products** tailored to specific symptoms.

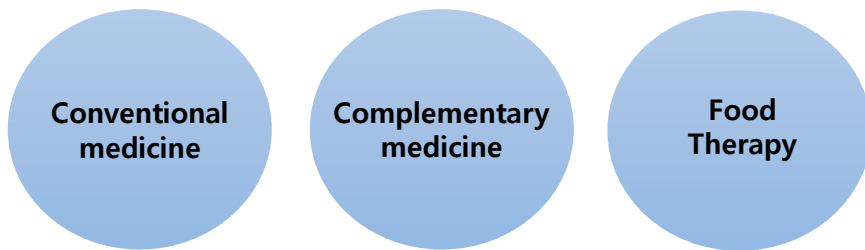
Simultaneously, we aim to broaden the **insights of the caregivers**, offering support and information.

Product Portfolio

Integrative medicine

Signatureby is an **Integrative Animal Medicine Care brand** that combines the fields of veterinary medicine, food nutrition and traditional Chinese veterinary medicine (TCVM), integrating their philosophies.

Integrative Animal medicine Care



A. Prescription (Specialty Diet) Line – Linked to veterinary care

(Can be administered independently for an extended period with daily nutritional content / maintenance diet)

1. Medication Administration Aid Can

- Used when administering medications that are difficult to feed.

2. Decreased Appetite Aid Can

- When your pet is not eating well or lacks energy, or before and after surgery

B. Specialized supplementary product Line

(Enhances physiological functions with the use of 1-2 functional ingredients. can be administered with water or pet food)

3. Oral-care (toothpaste / dog treat)

4. Oral-care (Nutritional / complex dog treat)

5. Joint (dog & cat)

6. Digestive system (Stomach aid / Pancreatic aid)

7. Wound healing

1. Medication Administration Aid Can / Prescription Diet Line

P/a (Pill aid)

Specialized dosing mousse type cans that minimize interference with medicinal properties

1. Medication is necessary to treat diseases, and it is necessary to feed medication with **high palatability to ensure that it is well taken.**
2. Highly palatable but **low fat and low protein** content differentiates it from other wet foods on the market and **minimizes interference with medicinal effects.**
3. Good ingredients (grain-free) and fine particles (mousse type) to **mix well with medication**, and mousse type for syringe inhalation.
4. Easy to carry at **30g**, sterilized packaging for hygiene and freshness.
5. Proven **palatability with 25 million sold** in the Korean market

Prescription(Specialty Diet)Line

Product Line Linked to
Veterinary Care

P / a : Pill aid

A specialized supplementary medication with low fat content to minimize drug interactions



A / a : Appetite aid

A product that promotes energy recovery with high digestive absorption and amino acids



(For dogs) Main ingredient – Duck

(For cats) Main ingredient - antibiotic-free chicken breast

2. Decreased Appetite Aid Can / Prescription Diet Line

A/a (Appetite aid)

Highly digestible and amino acid-rich diet mousse-type cans

1. A product that **works** to feeding **when he can barely eat anything**
2. If he is only sleeping because he feel lethargic, this product contains **essential amino acids** to revitalize him, which will help him **regain his appetite** and improve his quality of life.
3. A great post-surgery recovery food, it's also great for postpartum.
4. High-fat, high-protein, complete nutrient blend, **100% daily diet** when fed according to body weight.
5. **30g** is easy to carry, and sterilized packaging ensures hygiene and freshness.
6. Proven **palatability with 25 million sold** in the Korean market

Prescription(Specialty Diet)Line

Product Line Linked to
Veterinary Care

P / a : Pill aid

A specialized supplementary
medication with low fat content
to minimize drug interactions



A / a : Appetite aid

A product that promotes energy
recovery with high digestive
absorption and amino acids



(For dogs) Main ingredients - beef broth + duck

(For cats) Main ingredients - chicken broth + antibiotic-free chicken breast

3. Daily Oral-Care Line / toothpaste & dog treat

StomoAct BEO

Enzymatic and lactic acid toothpaste with no toothbrush Required

Features and differentiators

1. Lactobacillus acidophilus kills harmful bacteria, while **enzymes work to dissolve tartar**.
2. **A brushless toothpaste** that prioritizes convenience
3. Taste and odor free for less rejection, and **EWG safe** for human consumption.

StomoAct Preventeeth

Masticating dental gum with physical tartar removal structure

Features and differentiators

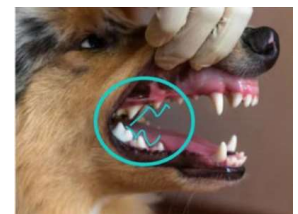
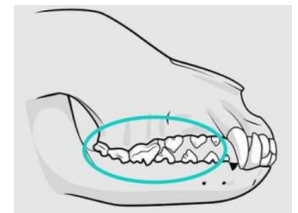
1. Different from the concept of conventional chewing dental gum, it has a structure that **physically stimulates the mouth and teeth with large and small bumps to scrape away tartar** from every corner.
2. Made from white fish, it is **not obese**. Hypoallergenic with 500 daltons of hydrolysis.
3. Hygienic packaging and adequate elasticity and strength for feeding senior dogs.
4. There is a hole in the center, so you can put BEO toothpaste in it and solve oral care at once.

Step-by-step oral care line

Step 1-2 for easy daily care

StomoAct® Step 1-2 daily care

As an initial step in dental care, only using the toothpaste can help with bad breath and plaque management along with the 500-dalton enzymatic hypoallergenic dental gum



4. Daily Oral-Care Line / Nutritional & Complex dog treat

StomoAct Oramune

The best oral nutritional with clinically proven ingredients

Features and differentiators

1. A product specialized for the oral cavity by using **patented Igy-GP raw materials** and containing raw materials rather than egg yolk antibody extract.
2. It contains **beta-glucan** specialized in strengthening oral immunity, which helps to **remove tartar**, and is hypoallergenic and highly palatable because it is **made of pollock meat**.
3. One week of feeding is enough to take care of the entire mouth and eliminate bad breath.
4. There are two types of products: a **powder type** that can be fed with feed and a **drops type** that can be given as a snack.

StomoAct Oramune Chew

Preventeeth + Oramune = 2 in 1

Features and differentiators

Preventeeth, a hypoallergenic dental gum with a physical tartar removal structure, and **Oramune**, the best oral comprehensive nutrient, in one.

Specialized supplementary product Line

PET SUPPLEMENTS

Oral support supplement

Oramune[®]

StomoAct[®] Oramune

stomatitis

bad breath / tartar

gingivitis / periodontitis

oral immunity



Oramune containing targeted antibodies against pathogenic bacteria and **clinical verification ingredients**

- ✓ IgY-GP
- ✓ StayC-50[®]
- ✓ Probiotics
- ✓ Beta-Glucan



Step-by-step oral care line

Step 1-2 for easy daily care

StomoAct[®]

Step 1-2 daily care

An enzyme toothpaste that can address bad breath and tartar with just 1-2 steps, even in the early stages of tooth decay, and low allergen dental gum with 500-dalton hydrolysis for allergy-free worry.



Preventeeth Gum, responsible for physical care & **Oramune powder**, responsible for oral immunity and bacteria care can be **combined One!**



5. Joint Support Line/ for dog & cat

BiotaC AR-78 : Pet joint supplement that penetrates the joints where it's needed in just 4 hours

Features and differentiators

1. Made with joint polymer hyaluronic acid, a **raw material with 7 U.S. patents** and clinical data for oral administration in dogs, which is also used in **racehorses**.
2. Vegan, free of sweeteners and animal ingredients.
3. It is a liquid type that **quickly penetrates into the joints in 4 hours** to control inflammation and pain, and can be properly fed according to body weight using an medicine dropper.

BiotaC AR-78 Feline : Tasteless and odorless for cat joint and urinary tract care in one step

Features and differentiators

1. Made from hyaluronic acid, a joint polymer with 7 U.S. patents and feline oral clinical data.
2. Vegan, free of sweeteners and animal ingredients.
3. Contains **MHB3**, an ingredient proven to **relieve joint pain and inflammation**, as well as **protect the urinary tract epithelium and strengthen the urinary tract barrier** in cats.
4. The liquid formula quickly **penetrates the joints to control inflammation and pain in as little as 4 hours**, and the dropper allows for weight-appropriate feeding.

Specialized supplementary product Line
PET SUPPLEMENTS

Joint support for dogs

BiotaC™ AR-78

- Joint pain
- arthritis
- Limping
- pre- and post-surgery joint inflammation

7 U.S. patents, fast-absorbing liquid specialized hyaluronic acid for joints

4hrs

Specialized supplementary product Line
PET SUPPLEMENTS

Feline joint and urinary system support supplement

BiotaC™ AR-78 feline

JOINT URINARY

Fast-absorbing joint and urinary system care supplement

6. Digestive System Support Line (1) / Gastrointestinal & Pancreatic support

GI-calm

Gastrointestinal total care nutrition with clinically proven gastric mucosal protective ingredients

Features and differentiators

1. Total care product with clinically proven gastrointestinal mucosal protective ingredients, 19 lactobacilli, 3 prebiotics, and cobalamin.
2. **Manage unexplained vomiting, irritable stomach, constipation**, and hairballs at home.
3. After 10 days of use, X-rays showed that the dog's swollen stomach returned to normal.
4. **Highly palatable** with chicken, plain yogurt, and goat milk.
5. There are two types of products : a **powder type** that can be fed with feed and a **drops type** that can be given as a snack

Specialized supplementary product Line
PET SUPPLEMENTS
Gastrointestinal support supplement

GI-calm
Gastro-Intestinal Calming

- Vomiting / empty stomach vomiting
- Frothy vomiting / food vomiting
- Sensitive stomach
- Hairball care



6. Digestive System Support Line (2) / Gastrointestinal & Pancreatic support

DA-alpha

A new pancreatic supplement with a pre-digestion concept that can be given for a long period of time

Features and differentiators

1. Chronic diarrhea and frequent vomiting indicate **digestion and absorption problems**.
2. When digestion and absorption are poor, food particles that are not well broken down become food for harmful bacteria and cause diarrhea and vomiting by multiplying harmful bacteria.
3. By sprinkling **DA alpha on the food beforehand** and delivering it 30 seconds later, it **pre-digests the food before ingestion**, making the stomach comfortable.
4. Double action of animal pancreatic enzymes and plant digestive enzymes.

Specialized supplementary product Line
PET SUPPLEMENTS

Pancreatic and digestive system support supplement

D/a:α
Digestive and alpha

Chronic pancreatitis
EPI(Exocrine Pancreatic Insufficiency)
Chronic diarrhea
Sensitive stomach

D/a alpha which helps pre-digest food for comfortable digestion with a compound pancreatic enzyme

Product Facts per 2 Serve (1g)	
Pepsin	184,000 USP
Bromelain	36 GDU
Amylase	65,000 USP
Probiotics	1x10 ⁸ CFU
Protease	58,000 USP
Lipase	78,000 USP
Vit. B12	250µg

60g

7. Wound Healing Line

Atopair

A wound healing and skin condition topical with SCI-grade ingredients

Features and differentiators

1. Used for minor wounds, **as a home medicine** for all dogs and cats.
2. Steroid and alcohol free, **safe to eat and lick** with natural ingredients.
3. It is excellent for moisturizing not only **wounds** but also **atopic dermatitis** and **itching**, as it draws moisture through osmotic pressure to help quick healing and regeneration.

Wound healing line

First aid medication for minor wounds and injuries in multi-dog and multi-cat households

Atopair

Inclusion of *Alchemilla vulgaris* in our proprietary product has resulted in the publication of **a wound healing study in a SCI-level journal**



Promotion of wound healing by stimulating angiogenesis, activating fibroblasts, and enhancing macrophage activity, as published in an SCI-level journal

Reference: Choi, Javur, et al., Biomedicine & Pharmacotherapy 106 (2018): 326-332.



Product recommendations based on symptoms

<p>When it's difficult to administer medication</p>		<p>For oral care, including bad breath and gum health</p>	
<p>P/a (Pill aid) dedicated can</p>		<p>Oramune (Powder, Drops)</p>	
<p>When lacking energy and refusing to eat anything</p>		<p>(dog) dislocation of the patella (cat) joint or urinary issues</p>	
<p>A/a (Appetite aid) dedicated can</p>		<p>BiotaC AR-78 / BiotaC Feline</p>	
<p>When it's difficult to brush their teeth</p>		<p>Gastrointestinal issues such as vomiting and diarrhea</p>	
<p>StomoAct BEO toothpaste</p>		<p>GI-calm (Gastro) / DA-α (Pancreas)</p>	
<p>Need to give them gum for dental care</p>		<p>Injuries in multi-dog and cat households, and grooming-related wounds</p>	
<p>StomoAct Preventeeth dental gum</p>		<p>Atopair (Household medicine)</p>	

When you meet **Signatureby**,
your **pet's health concerns** will change

